



San Cristóbal Cancer Institute

INFORMATION FOR PHYSICIANS

SANCRISTOBALCANCER.COM/PHYSICIANS

A hand holding a lit sparkler against a dark night sky with bokeh lights.

A new place to *find hope*

The new San Cristóbal Cancer Institute is a beacon of hope for cancer patients and their families in Ponce and neighboring cities. Our dedicated team of experts is hard at work perfecting and delivering the most innovative and effective cancer detection and treatment options in the area.

As stewards for our patients and loyal partners for our referring physicians, the San Cristóbal Cancer Institute team is at the forefront of local and national cancer care and on a mission to provide unmatched care for optimum patient outcomes.



The Gift of Legacy

Continuing in the legacy of the old Hospital Oncológico Andrés Grillasca, we are proud to become the new 'Oncológico de Ponce'.

While our community still remembers the legacy and significance of the old institution, we are thrilled to be welcomed to its old facilities, with the same hope and positive outlook as our predecessor. Our Medical Director, **Dr. Carlos Remedios** remembers vividly his work as a teenager at the Andrés Grillasca Hospital and will always hold its mission close to his heart. We, too, are on a mission to provide comprehensive cancer care with the same passion and desire to serve our community as its founders and loving medical staff. Join us on this new chapter and help us reshape the medical community in Ponce and Puerto Rico.

Driven by Compassion

With pastoral services, emotional support and palliative care provided by our attentive nursing staff, we bring warmth and a human touch to healthcare and make each patient's journey more positive. We strive to lighten the load at every possible opportunity.

A Holistic Approach

Using the newest technology, coupled with alternative medicine and palliative care, we can provide an innovative treatment outlook, transforming traditional cancer care for our patients.

The San Cristóbal Difference

Medical Expertise.

Our top-notch medical professionals have the knowledge and expertise to treat cancer from all stages and for patients of all ages. Our specialized care differentiates us from other cancer treatment centers in Puerto Rico and sets a high standard locally and abroad.

Patient-Centric Approach

At SCCI, patients come first. With useful education resources, caring psychology and social work professionals, and other support tools, our institution promotes a patient-centric approach during such an overwhelming process.

No More Waiting

Cancer doesn't wait, and neither should your patient's treatment. Our new, state-of-the-art center has the shortest lead time for patients in Puerto Rico. Our team of cancer specialists can quickly evaluate and start treatment, ensuring prompt care and providing better patient outcomes.

Seamless Referral Process

Using our convenient digital interphase, referring physicians can quickly direct patients to our center for fast treatment, with an efficient, fully HIPAA-compliant information transfer protocol. Our team is also available over the phone or on-site for walk-in patients with a qualified medical order.

Multidisciplinary Approach.

Our cancer institute offers specialized cancer treatment through a multidisciplinary approach, meaning each patient benefits from the expertise of a team of professionals including medical, radiation and surgical cancer specialists, pathologists, radiologists, nuclear medicine doctors, advanced practice nurses and other support staff.



Treatment Options that are as unique as our Patients

San Cristóbal Cancer Institute is committed to delivering top-notch cancer treatment with excellence, kindness and respect. Our doctors and medical staff interact every day with patients and industry partners to ensure that patients and their families benefit from a wide array of the most up-to-date standard and experimental treatment options.

SANCRISTOBALCANCER.COM/TREATMENT



Radiotherapy is our Specialty

Radiotherapy is a crucial treatment in the fight against cancer. By using high-energy radiation, it targets cancer cells, either destroying them or preventing their growth. This therapeutic approach can be curative, palliative, or complementary to other treatments. Radiotherapy saves lives, alleviates symptoms, and improves the quality of life for patients.

Radiotherapy

Radiotherapy is our specialty. Our leadership team and medical staff have mastered a variety of radiology techniques by effectively treating a wide array of cancers for nearly 30 years. We are now on a mission to restore hope to San Cristóbal patients with the most advanced radiotherapy available in Ponce and beyond.

- Image-Guided Radiotherapy (IGRT)
- Intensity-Modulated Radiotherapy (IMRT)
- Stereotactic Body Radiotherapy (SBRT)
- Stereotactic Radiosurgery (SRS)
- Gated RapidArc® Radiotherapy

A hand holding a wooden spoon over a bowl of yogurt with granola, fruit, and a leaf. The background is a soft-focus image of a person in a white lab coat.

Integrative Medicine

Complementary therapies proven effective in supporting patients when paired with traditional methods have been incorporated into the comprehensive treatment programs at San Cristóbal Cancer Institute. Our evidence-based Integrative Medicine program provides cancer patients access to complementary therapies to help them through their conventional treatments.


Brachytherapy

Also called Internal Radiation, Brachytherapy is one of our sophisticated types of radiation therapies used to treat cancer. The technique allows doctors to deliver higher doses of radiation to more-specific areas of the body, compared with the conventional form of radiation therapy (external beam radiation) that projects radiation from a machine outside of the body. One of the most notable advantages is that Brachytherapy may cause fewer side effects than does external beam radiation, and the overall treatment time is usually shorter with brachytherapy.

Radiosurgery

Radiosurgery is an effective treatment for many different types of cancer. It uses sophisticated technology to deliver very precise and accurate beams of radiation to a tumor while minimizing exposure to nearby healthy tissue.

There are two main types of radiosurgery—stereotactic radiosurgery (called SRS), which is for cancers in the brain and spinal region, and stereotactic body radiotherapy (also called SBRT), for cancers in other parts of the body. Both of these treatments are noninvasive—that is, the body isn't operated on in the traditional sense.



“A standard intensity-modulated treatment takes 10 minutes. With TrueBeam®, it can be done in less than two.”

The Most Advanced Cancer Care Center in Puerto Rico

Grupo San Cristóbal has conducted tremendous industry research and invested aggressively in the newest and most sophisticated equipment for the diagnosis and treatment of a wide variety of cancers, to ensure the best possible patient outcomes and elevate the local standard in cancer care.

Through partnerships with some of the leading healthcare manufacturers, we have developed a holistic approach to cancer care, applying the expertise and wealth of resources that Grupo San Cristóbal boasts through its multidisciplinary team of medical professionals and administrative leadership.

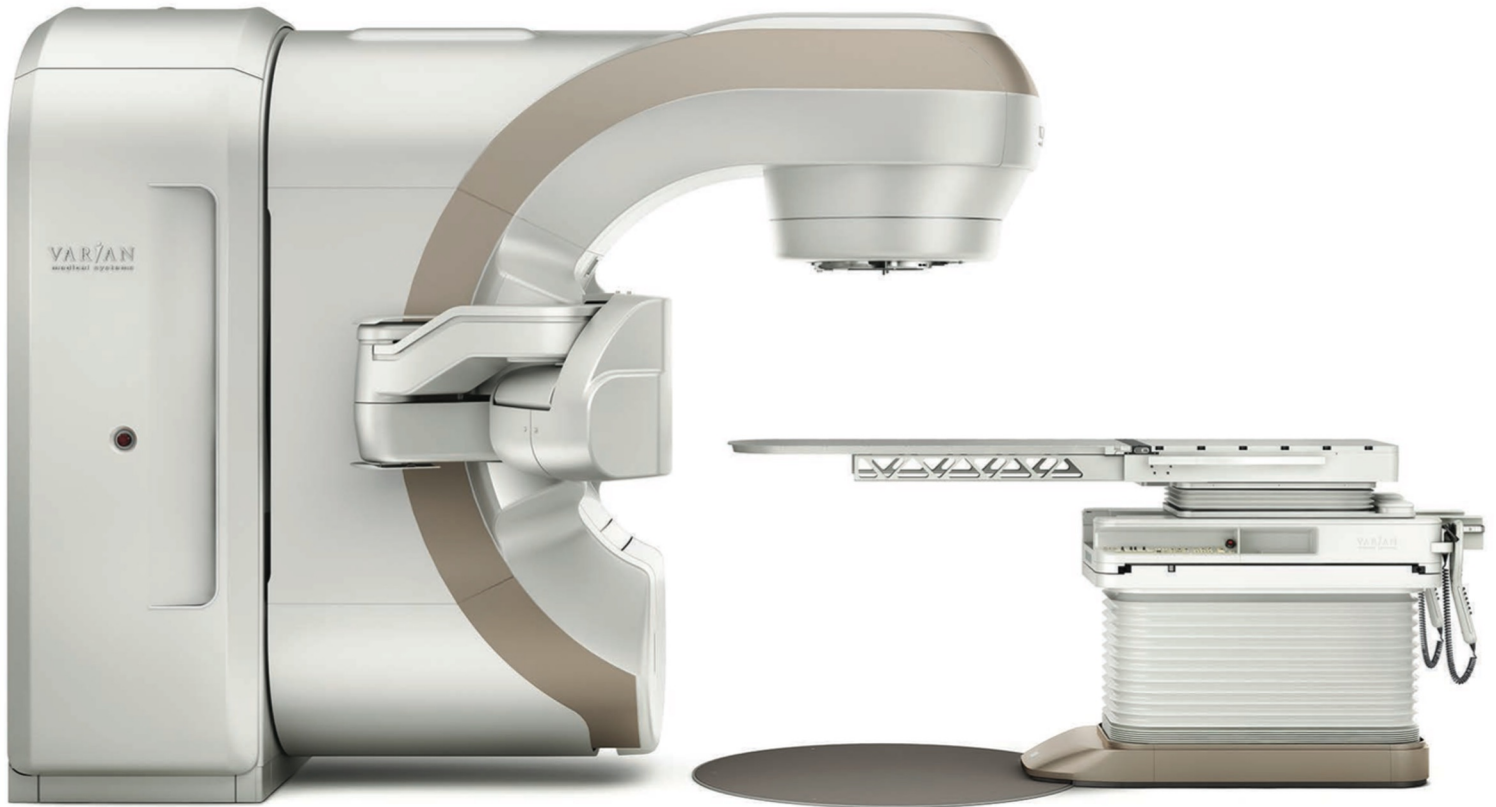
Our forward-thinking approach to cancer treatment is supported by cutting-edge PET Scan machinery as well as the most advanced radiotherapy system available island-wide, in an effort to deliver the highest quality of care possible.

SIGNA™ Architect Technology: Embrace the Future

The revolutionary technology of SIGNA™ Architect enables our team to capture cleaner and crisper images using AIR™ Recon, the latest-generation reconstruction engine. These technological advancements bring about efficiencies for both our staff and patients, as we can reduce exam setup times and enhance testing processes through AIR Touch™ and AIRx™*, a set of intelligent workflows that automate coil selection and slice prescription.

With the utilization of AIR™ Recon, we have observed improved image quality in 80% of cases without any additional time required. By leveraging HyperSense*, we can decrease scan time by up to 50%, thereby transforming the patient experience and achieving heightened versatility. Moreover, our AIR™ Coils*, which received the prestigious AuntMinnie's 2019 Best New Radiology Device award, contribute to maximum comfort and efficacy by accommodating various scan types and patient sizes. Additionally, our feet-first imaging approach has reduced claustrophobia rejection rates by 90%. Furthermore, the machine allows for non-contact, free-breathing scanning through Auto Navigator, further enhancing patient convenience.





Say 'hello'
to High-
Precision
Radiotherapy
Treatment with
TrueBeam®

The TrueBeam® system brings leading-edge cancer care to communities by positioning clinics at the forefront in the fight against cancer. Designed from the ground up to treat moving targets with advanced speed and accuracy, the TrueBeam platform is a fully-integrated system for image-guided radiotherapy and radiosurgery. The TrueBeam system treats cancer anywhere in the body where radiation treatment is indicated, including lung, breast, prostate and head and neck.

The number of physicians adopting advanced treatments like Stereotactic Body Radiation Therapy (SBRT) is rising. Technologies such as motion management, integrated imaging, and high dose rates are some of the tools that are required for the delivery of advanced treatments like stereotactic body radiation therapy. The TrueBeam system channels innovative, intelligent, and intuitive thinking to provide technology built with the customer in mind. The system offers clinicians intelligent tools for a wide spectrum of advanced treatment options including SBRT. From fast imaging to accurate dose delivery, TrueBeam is designed to help clinicians navigate the complexities of cancer care with confidence.

From every angle:

TrueBeam® rotates around the body to deliver radiation therapy from nearly any angle. The system provides real-time imaging, which allows your doctor to direct higher doses of radiation with greater accuracy.

We move with our patients:

At the same time, TrueBeam®'s respiratory gating technology gives our team the ability to synchronize radiation beams with the patient's breathing to improve accuracy and provide optimum delivery. For example, doctors can treat a moving lung tumor as if it were standing still, as respiratory gating protects nearby organs and healthy tissues from unnecessary radiation.

A better patient experience:

TrueBeam® can make the experience of receiving radiation therapy more comfortable. Most treatments take just a few minutes a day, which means less time on the treatment couch and reduced motion during treatment.

TrueBeam® is also remarkably quiet during operation, and features communication technology that enables interaction between patients and our medical staff operating the equipment. The machine has two closed-circuit television systems so treating clinicians can see and hear the patient at all times.

TrueBeam® offers significant improvements in performance and radiotherapy delivery, setting the highest bar in the industry:

- Our TrueBeam® system can deliver treatments up to 75 percent faster than other advanced radiation machines.
- Typically, a standard intensity-modulated treatment would take 10 minutes, but with TrueBeam®, the same process can be done in less than two minutes.
- Complex radiosurgery typically takes 40 minutes to an hour. It can be completed in 5-20 minutes using TrueBeam®.
- RapidArc® technology in TrueBeam® can mean treatment times as short as 1 minute.
- The system performs accuracy checks every 10 milliseconds throughout an entire treatment.
- The precision of a TrueBeam® system is measured in increments of less than 1 millimeter.
- More than 100,000 data points are monitored continually during treatment to ensure safety

A Siemens Biograph Horizon PET/CT scanner is shown from a side-on perspective. The machine is white with a large circular opening in the center. The Siemens logo is visible in blue at the top left. A small digital display on the left side of the machine shows a patient's name, 'John Doe', and a patient ID, '900123456789'. The text 'Biograph Horizon' is printed on the right side of the machine. A control panel with a circular dial and buttons is located on the right side of the machine's body.

SIEMENS



Biograph **Horizon**

State-Of-The-Art PET CT Technology

Biograph Horizon enables our physicians to visualize small lesions early. The system provides higher resolution and better image quality, which is valuable for many indications, like lung cancer – the most common PET/CT test. The system's efficient high-contrast, high-resolution PET/CT with Time-of-Flight helps our medical team identify additional diagnostic procedures, supporting improved patient outcomes, lower procedure costs, and reduced liability risks.

To increase productivity and time spent with patients, Biograph Horizon simplifies our staff's daily routine and lets us get back to patient treatment. For example, we can run quality control procedures overnight, scans can be performed in as fast as 5 minutes, and reconstruction runs alongside acquisition for image delivery just 30 seconds after the scan. This allows us to reduce our operation time and spend more time sharing our insight with patients and their families.



Why San Cristobal Cancer Institute

The outlook for people with cancer is changing rapidly — and has never been more positive. As a comprehensive cancer center whose leadership boasts over 30 years of radiotherapy experience, San Cristóbal Cancer Institute is raising the bar in local cancer care and we're revolutionizing healthcare in Ponce and Puerto Rico.

We offer the latest techniques to diagnose and treat cancer, no matter which type of cancer or allied disease your patient may have. Through our multidisciplinary team approach, we provide your patient with a diverse physician, nursing, and research expertise, ensuring that he or she has the best chance possible for a cure and a high quality of life. We'd love to see your practice join our efforts.

SANCRISTOBALCANCER.COM/PHYSICIANS

A hand is holding a tablet that displays a medical image, possibly an ultrasound or X-ray. The entire image is covered with a semi-transparent green overlay. The text is white and positioned in the upper left and center areas of the image.

Refer Your Patients With Confidence.

Thank you for entrusting your patient's care to us. Our partnerships with health professionals in our communities are vital. We're grateful for each referral you make to SCCI, whether it be for a patient requiring an initial cancer assessment, screening or surveillance, treatment, a second opinion, or a pathology consultation, and we'll keep you informed throughout the referral process and your patient's course of treatment.

We also offer resources for physician outreach that enhance each partner's experience, as well as other helpful links in the **[Physician Resources](#)** section of our website.

Ultimately, when you and other healthcare professionals entrust your patients to our care, we help assure that everyone benefits from our drive to change how the world treats cancer.



Less Waiting Means Better Outcomes.

As an innovative cancer-specific healthcare facility, SCCI offers your patients access to the most advanced treatment without the wait time required at other centers (locally and otherwise). This shorter lead time helps ensure that your patient will have the best chance possible for a cure and a high quality of life.



Clear, Constant Communication.

As your patient's primary physician, you are a valuable member of our team that we keep informed throughout the process and your patient's course of treatment. We also provide our referring physicians with news and updates about the Center, industry updates and more information to enhance the education, work and treatment experience for all parties.



A Truly Vanguard Institution.

By pursuing the best medical team, investing aggressively in cutting-edge technology and closely following the newest cancer research, we have set a high standard of excellence in cancer detection and treatment statewide. Our sophisticated equipment, paired with the unwavering commitment of our staff, make **San Cristóbal Cancer Institute** a safe and haven for patients and their families.

A photograph of surgeons in an operating room, wearing masks and scrubs, with a blue overlay containing text.

SCCI Referral Program

Collaboration is deep at our core and that's why we offer referring physicians a unique experience at SCCI.

Thank you for trusting your patient's care to us. We take special pride in our relationships with our patients, but also the referring physicians that direct them to our state-of-the-art cancer center.



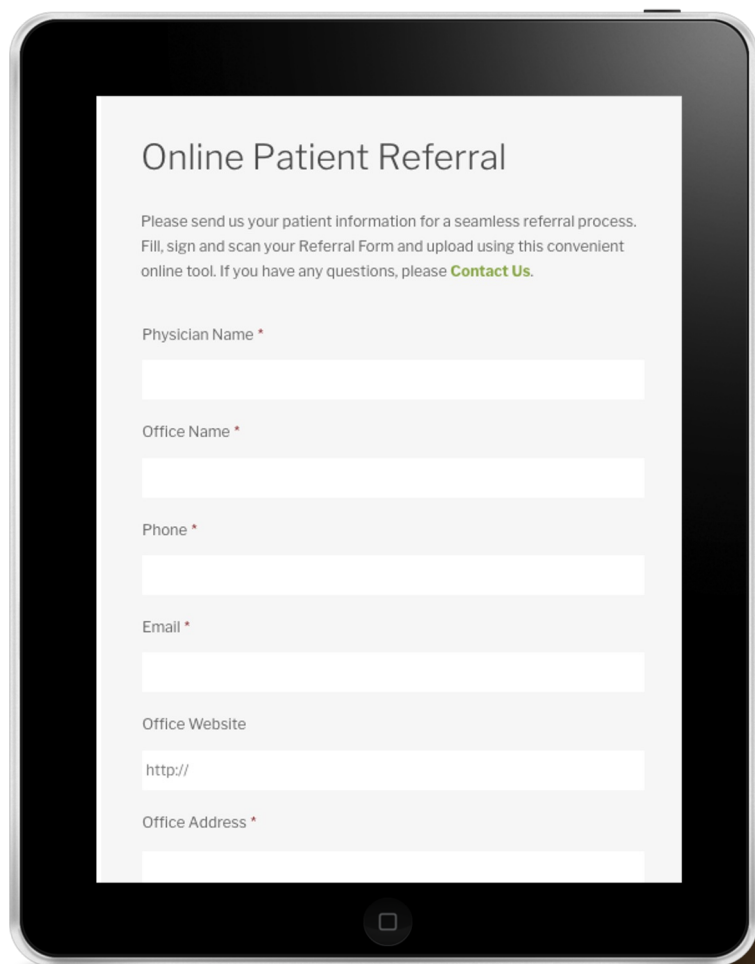
Our partnerships with
health professionals in
our communities are vital.

We'll keep you updated
and collaborate with you
on their ongoing care.

Tools for Physicians.

We value the input of our referring physicians, and we nurture these relationships for the best possible patient outcomes. Your collaboration allows our organization to grow and ensures the highest quality of care for patients and their families.

- **Refer Patients Using Our Online Form**
- Receive Patient Updates
- Enjoy the SCCI Newsletter
- Attend VIP SCCI Events
- Learn About Medical Tourism
- Contribute Content to Our **[Blog](#)**
- Speak at Patient and Community Events
- List Your Practice on our **[Referring Physician Directory](#)**
- Receive Education Materials for Your Office
- **[Send us Your Feedback](#)**

A tablet with a black bezel and a silver-colored back is shown at a slight angle. The screen displays a white form titled 'Online Patient Referral'. The form includes a paragraph of instructions, a link to 'Contact Us', and several input fields for physician and office information. The fields are labeled 'Physician Name *', 'Office Name *', 'Phone *', 'Email *', 'Office Website', and 'Office Address *'. The 'Office Website' field has 'http://' pre-filled. The tablet has a single circular home button at the bottom center.

Online Patient Referral

Please send us your patient information for a seamless referral process. Fill, sign and scan your Referral Form and upload using this convenient online tool. If you have any questions, please [Contact Us](#).

Physician Name *

Office Name *

Phone *

Email *

Office Website

http://

Office Address *

Physicians can refer patients to San Cristóbal Cancer Institute with ease, using our Online Patient Referral Form.

SCCI Online Patient Referral System

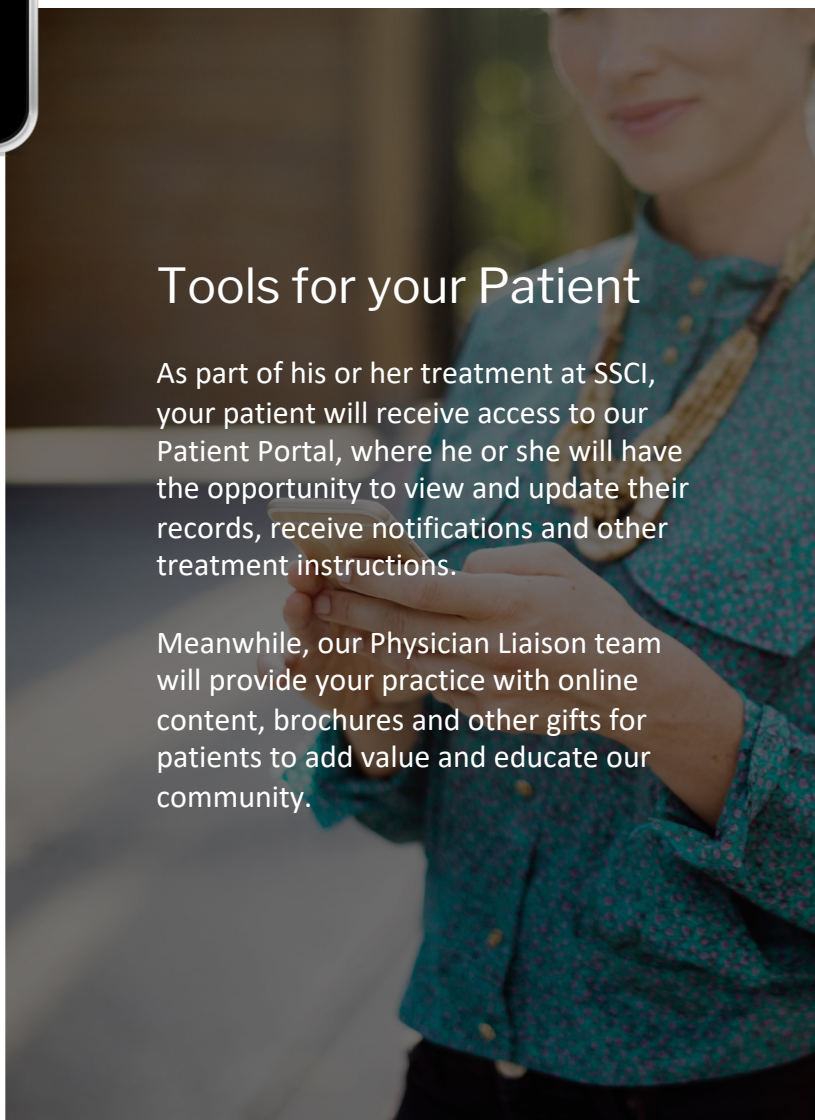
Although the original Medical Referral Form (in paper) must be kept in your office, the system allows physicians to upload some quick information and upload the document.

Once the information is added and the document loaded, you will receive a confirmation and next steps to stay in touch with our staff and follow along with your patient's case.

Tools for your Patient

As part of his or her treatment at SCCI, your patient will receive access to our Patient Portal, where he or she will have the opportunity to view and update their records, receive notifications and other treatment instructions.

Meanwhile, our Physician Liaison team will provide your practice with online content, brochures and other gifts for patients to add value and educate our community.



List Your Office In Our Online Directory

If you'd like to become part of our network of providers and benefit from the high standard of care, we have created at San Cristóbal Cancer Institute, please contact us to join our Physician Directory.

We value the opportunity to treat your patients and thank you for entrusting their care to us. Our partnerships with health professionals in our communities are vital and we nurture these relationships with professionalism and commitment. We'll keep you updated and collaborate with you on their ongoing care.

Share Your Insight in the SCCI Blog

We give our physicians the opportunity to share their knowledge and medical insight with our patients and the community, by contributing content to our website and their education publications, as well as participating as a guest speaker at our professional and patient events. We recognize the importance of our partners' knowledge and actively promote a sense of collaboration with the medical community by providing spaces where we can all grow together. Please sign up to our Newsletter to learn about these opportunities and take part in the education of our community.

Stay Informed: SCCI Monthly Medical Newsletter

Stay on top of the latest cancer news and updates from San Cristóbal Cancer Institute by signing up to our curated monthly newsletter. With useful information about how we are changing local care, medical tourism, industry trends, events and more, you'll always be informed about the new and exciting ways we are marketing our organization and helping partnering physicians grow with us.

VIP Physician Events by SCCI

At SCCI we have designed a series of events for the medical community that help us stay in touch with our most valuable professional partners while showcasing the wonderful attributes of our state-of-the-art center. We are currently working on our 2018-19 event calendar, but please add yourself to the list to receive updates and exclusive invitations.



Let's Pave the Way for Wellness Together.

We are excited to partner with your office on our mission of hope and health for cancer patients in Ponce and beyond.

Together we can give patients a warm welcome to the otherwise overwhelming journey of cancer diagnosis, treatment and recovery.
Together we can lighten their burden.
Together we can save lives.

Our team is ready to transform your patient's experience and get you started on our partnership.

San Cristóbal Cancer Institute

921 Ave. Tito Castro
Ponce, PR 00716
(787) 648-5057

physicians@sancristobalcancer.com